

Call for Proposals

Initiative to mitigate the negative effects on food security caused by climate change in Mozambique, Malawi and Zambia

AID 13154/01/0



ORIGINS OF THE INITIATIVE

The El Niño Phenomenon in AICS Emergency Programming

- High dependence on rainfed agriculture and fragile livelihoods
- Widespread poverty, high unemployment, and economic weakness
- Exposure to diseases and environmental degradation
- Increased climate migration in search of opportunities
- Aggravated food insecurity due to droughts, floods, and tropical cyclones
- Growing competition for vital resources such as water and land

REGIONAL CONTEXT



Launch [SADC REGIONAL HUMANITARIAN APPEAL](#)

Budget: USD 5.5 billion

Target Beneficiaries: 62 million people

Key Partners: FAO, OCHA e WFP

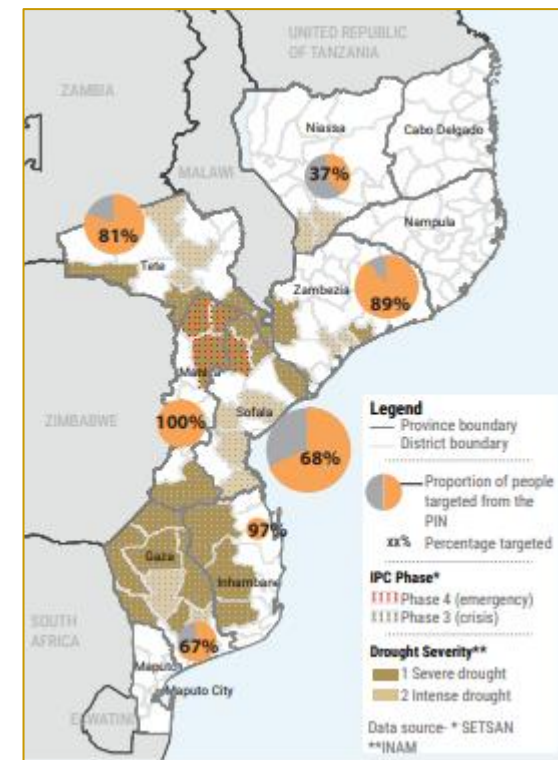
El Nino Regional Humanitarian Overview

- Agricultural production reduced by half
- Rising market prices
- Increasing food insecurity and malnutrition cases
- Negative coping strategies
- Epidemics and impact on the health system
- Gender-related impacts



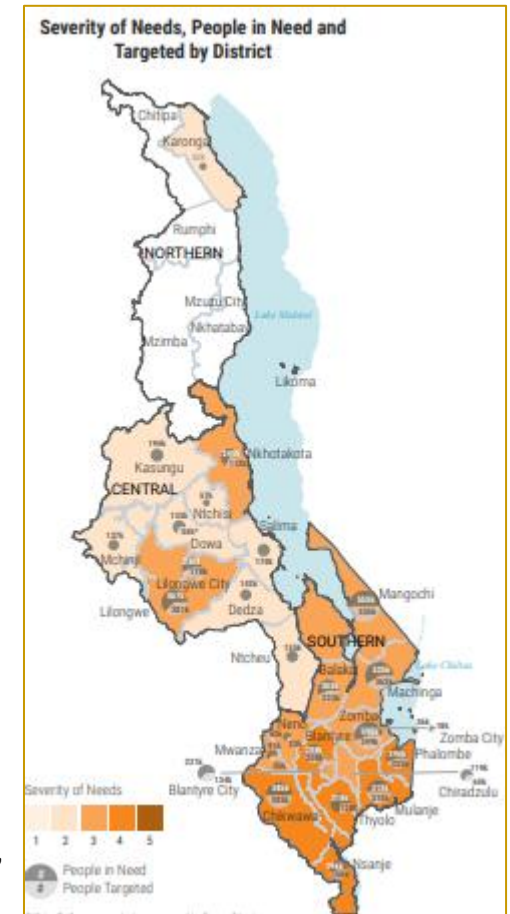
NATIONAL CONTEXT

- ❑ Launch Drought Appeal complementary [HNRP 2024](#)
- ❑ **Food insecurity levels (Post-shock SETSAN assessment)**
 - IPC3: 2.275.600 Pax
 - IPC4: 510.151 Pax
- ❑ **Appeal objective:** Support from August 2024 to July 2025 for 1.8M beneficiaries, including 1.4M priority cases
- ❑ **Geographical Focus:** 37 districts in **Gaza, Inhambane, Sofala, Manica, Tete, Niassa, and Zambezia** provinces



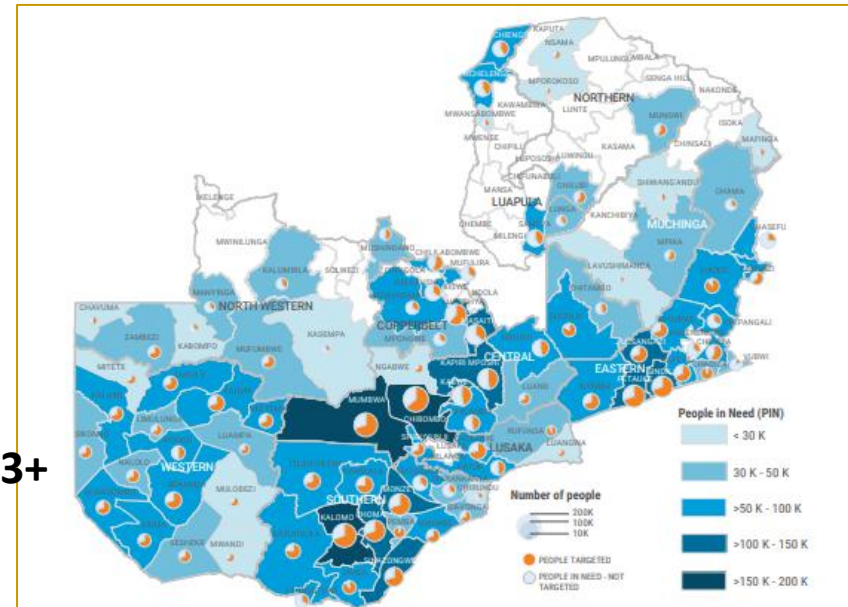
NATIONAL CONTEXT

- ❑ **State of Emergency (30.04.2024)** 23/28 Districts
- ❑ [Launch Drought Flash Appeal](#)
- ❑ **Appeal Objective:** Support from July 2024 to April 2025 for 6.1M beneficiaries, including 3.8M priority cases (USD 136.5M)
- ❑ **Geographical Focus:** Central and southern regions
- ❑ **District emergency level 3:** Balaka, Zomba, Zomba città, Nkhotakota, Lilongwe, Lilongwe città, Mangochi, Machinga, Neno, Mwanza, Chiradzulu
- ❑ **District emergency level 4:** Blantyre, Blantyre città, Phalombe, Mulanje, Thyolo, Chikwana e Nsanje

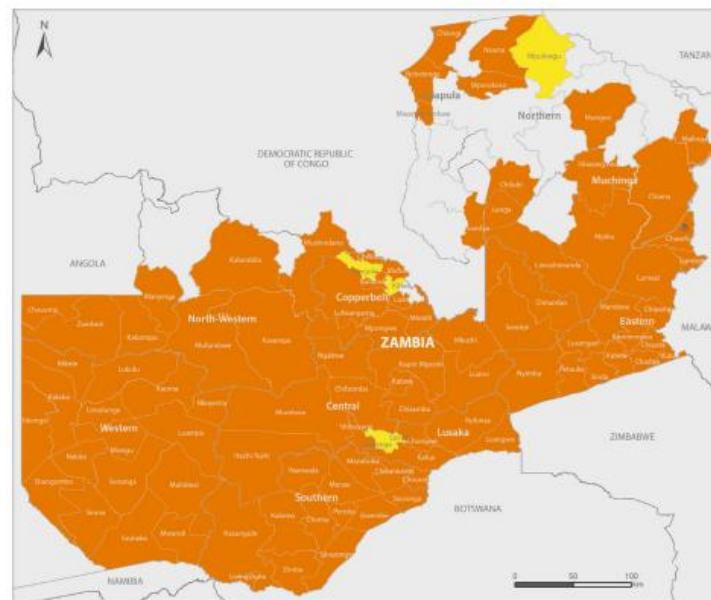
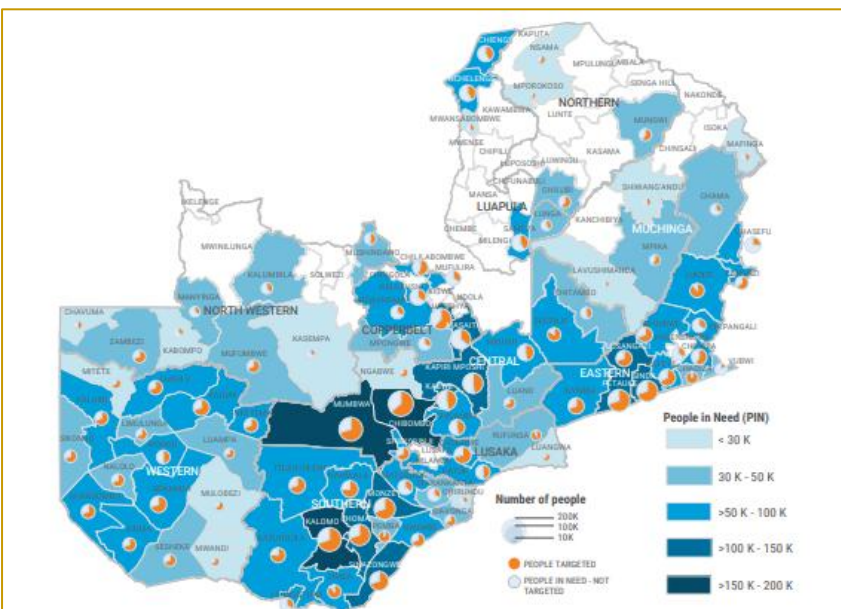


NATIONAL CONTEXT

- ❑ State of Emergency (29.02.2024)
- ❑ [Drought Appeal](#) + [Revised Drought Flash Appeal](#)
- ❑ **Revised Appeal Objective:** 5.4M beneficiaries, including 3.2M priority cases (USD 197M)
- ❑ **Geographical Focus:** Central, Eastern, Southern, Western Provinces. **89 out of 117 districts in IPC3+** (ref. [IPC Analysis ottobre 2024](#))



NATIONAL CONTEXT



Key for the Map

IPC Acute Food Insecurity Phase Classification

(mapped Phase represents highest severity affecting at least 20% of the population)

- 1 - Minimal
 - 2 - Stressed
 - 3 - Crisis
 - 4 - Emergency
 - 5 - Famine
 - Areas not analysed
- Evidence Level**
** Medium

SECTORAL FRAMEWORK

- ❑ Support for food security programs, Promotion of high-nutritional-value, high-yield, climate-resilient agricultural activities, inputs distributions
- ❑ Creation of integrated and multisectoral agricultural and WASH systems (rainly independency)
- ❑ Promotion of sustainable livelihoods and smart agricultural technologies
- ❑ Livestock protection (vaccinations, farmer training, restocking)



In Zambia the construction of household and/or community silos for crop and seed storage is mandatory

- ❑ Rehabilitation/development of water sources for domestic and agricultural use (priority for schools/CS)
- ❑ Promotion of hygiene and sanitation practices, distribution of materials
- ❑ Rehabilitation/construction of community sanitation facilities (CLTS approach)
- ❑ Treatment, storage, and reuse of wastewater/rainwater
- ❑ Community awareness, training, and support for local CSOs





SECTORAL FRAMEWORK



- Supply of medicines, consumables, and nutritional supplements focusing on malnutrition prevention and treatment
- Identification/treatment of SAM/MAM cases
- Community participation
- Vaccination, awareness, and treatment of infectious diseases (malaria, cholera, diarrhea, STDs, MPOX)



- Surveillance/prevention/support for SGBV
- Psychosocial and mental health support services
- Awareness/training of health and community personnel on GBV (improving referral pathways)
- Strengthening legal support mechanisms for GBV survivors (against *negative coping mechanism*)





SECTORAL FRAMEWORK



- Awareness on PSEAH (active involvement of men and women)
- Child protection (focus on unaccompanied minors), creation/reinforcement of services
- Training and support for local CSOs (with a focus on women-led and disability-focused organizations) for psychosocial support and humanitarian assistance
- Training for men and boys as agents of change
- Socioeconomic integration of people with disabilities (PwD) and vulnerable groups



- Access women irrigation technologies
- Transfer of knowledge and smart technologies



- Water sources: active participation women and PwD management and planning
- Sanitation practices: needs women, PwD, minors, elderly
- PSEA/GBV awareness/monitoring water points and community toilets.



- Community participation, particularly women, in nutrition support

IMPLEMENTATION MODALITIES

Lot 1



1.530.000

2 Projects: 765.000 Eur

OR

1 Joint projects:

1.530.000 Eur



21 months

Lot 2



750.000

1 Project: 750.000 Eur



(individual or joint)



21 months

Lot 3



1.200.000

1 Project : 1.2M Eur

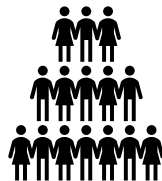


(individual or joint)



21 months

BENEFICIARIES



Low-income rural producer families in vulnerable conditions

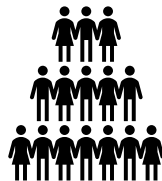
Women-headed households with high economic and social vulnerability

Members of farmers' associations and groups for natural resource management and women's socioeconomic development

Women, youth, and children under 5 years old, particularly for health services

Persons with disabilities, benefiting from enhanced service accessibility, dedicated services, and inclusive participation across activities

BENEFICIARI



Women must represent at least 50% of all activity beneficiaries

Focus on PwD, with their representation evaluated (see evaluation grid: “6.2. Does the protection of vulnerable groups (minors and/or PwD) receive adequate consideration?”)

FOCUS PARTICIPATION REQUIREMENTS

CSOs ENROLLED IN AICS LIST	CSOs NOT ENROLLED
a) Enrolled in AICS List <u>LINK</u>	a) Agreement with enrolled entity (pre-existing Call + also valid after activity conclusion). In the presence of such an Agreement, possible ATS also with other CSO enrolled list
e) Tax, contribution and insurance obligations in Italy	e) Tax, social security, insurance obligations (current regulations) <u>Country of origin</u>

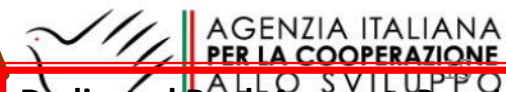
FOCUS PARTICIPATION REQUIREMENTS

	ATS	
	Mandating	Mandated
Presentation Annex A2	✓	✓
Experience Humanitarian aid projects	✓	✓
Experience aid Sector	✓	✗ ✓
Ability to operate on-site	✓	✗ ✓
Agreement with nonprofit/profit partners	✓	✗
Bank Guarantee	✓	✓
Receipt of AICS funds	✓	✗

No if just admin/manag role

Mandating CSOs without operational offices in Italy: Bank guarantee can be assigned to the Mandated CSO if explicitly stated in the ATS Agreement

Dedicated Bank Account: Required for each member



FOCUS PARTICIPATION REQUIREMENTS



Local/international nonprofit partners operating in the field

Profit partners (companies or associations of companies including local ones) Motivated and substantiated **Know-how** needed for participation in Call

Features

Agreement: Activities/responsibilities/. Budget/funding modality/commitment to compliance with AICS procedures.

If the applicant is an **ATS**: Signed agreement with the Mandating CSO

Limit on AICS funds allocated to partners:
40% + Declaration of dedicated account opening

FOCUS PROPOSAL EVALUATION



Possible Co-financing Limit:
25% BCE
Financial Plan



Realization of a
gender analysis



Promotion of
vulnerable
groups
(Women,
youth, PwD)



M&E Plan.
SMART
outcome and
impact
indicators



On-site
coordination
(synergies/experience/duplication)
and promotion of
local CSOs. Ongoing
program synergies
(NEXUS)



ANNEX
A3Evaluation Grid



AGENZIA ITALIANA
PER LA COOPERAZIONE
ALLO SVILUPPO

FOCUS M&E

M&E Plan with Example
Matrix
[LINK](#)

INDICATORS
Standard Sphere
Indicators / IASC
Guidelines / HRP
Indicators / Customized
CSO Indicators. Focus
on Second-level
Indicators (Outcome
over Output)

COORDINATION
Humanitarian Clusters
5W tool



DATA SOURCES
Pre-existing data / CSO
quick surveys / Challenge
analysis

Notice

The FEWS NET Website, the FEWS NET Learning Platform, and the FEWS NET Data Warehouse and Data Explorer are currently unavailable.

CONCLUSION

maputo@pec.aics.gov.it



24.02.25

[LINK](#)

FAQ Submission Limit.

Keeping the AICS Maputo web site monitored.

17.03.25

Presentation limit Proposals

4:30 p.m. (Maputo time)

PEC or Manual delivery in the absence of PEC.

02.05.25

Proposal evaluation closing limit



AGENZIA ITALIANA
PER LA COOPERAZIONE
ALLO SVILUPPO